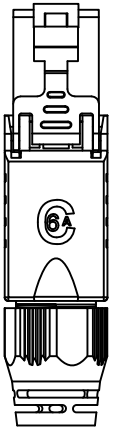


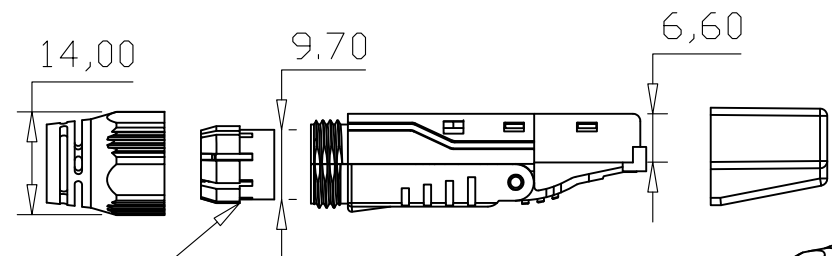
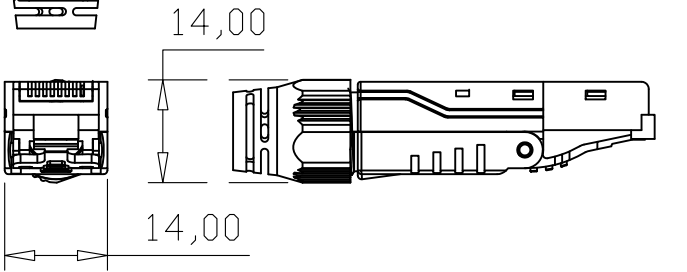
1 2 3 4 5 6

A

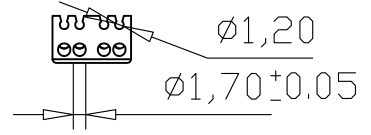


- CAT6A Class EA RJ45 plug to be assembled in the field
- FTP TYPE: 1 piece Design
  - Easy Assembly - easily terminated in the field in 2 minute without any special tools
  - Operation temperature:-40 °C to 60°C, Relative humidity: 85%(30 °C), Air pressure: 70-106Kpa.
  - Gold Plated Phosphor Bronze Blade: phosphor bronze and gold plating (3~50uinch), mating durability not less than 750 cycles ;
  - Anti-burn performance: product made from Kirsite \ PC
  - Intermediate resistance: no more than 20m ohm in normal atmosphere pressure (not including bulk resistor) ;
  - Insulated resistance: no less than 1,000M ohm in normal atmosphere pressure ;
  - Intensity of anti-currency: DC 1,000V (AC,700V), no puncture and flash-over phenomenon in one minute ;
  - Retention strength: 7.7kg between jack and plug.
  - Label: clear label to ensure easy to management ;
  - Cable Jacket Diameter from 6 to 8.3 mm

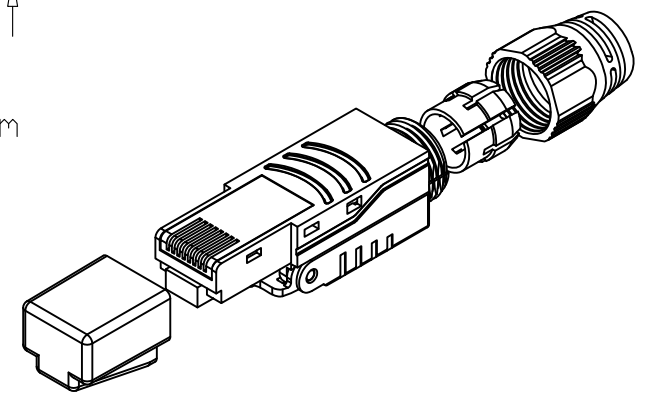
B



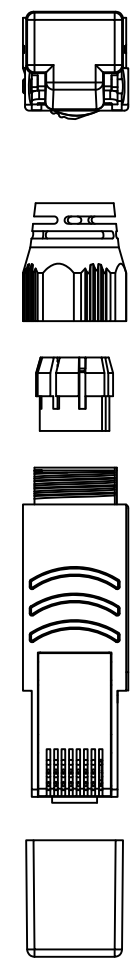
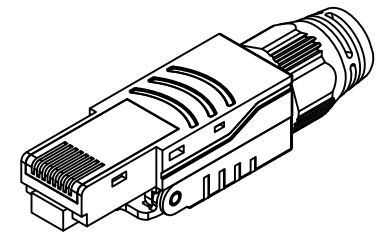
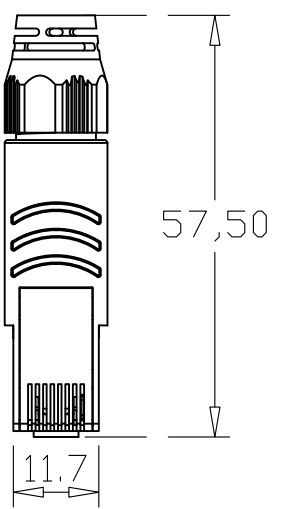
C



chromium plating



D



TITLE:						
	INCH	MM				
.X	.015	.30				
.XX	.010	.10	TITLE:			
.XXX	.005	.05				
DRAWN BY	MA		P/N:			
CHECK BY			SCALE	1:1		REV
APPD BY			UNIT	MM		
			SHEET	1/1		DWG NO:
			DATE	2019/01/10		

1 2 3 4 5 6